

## DETAILS

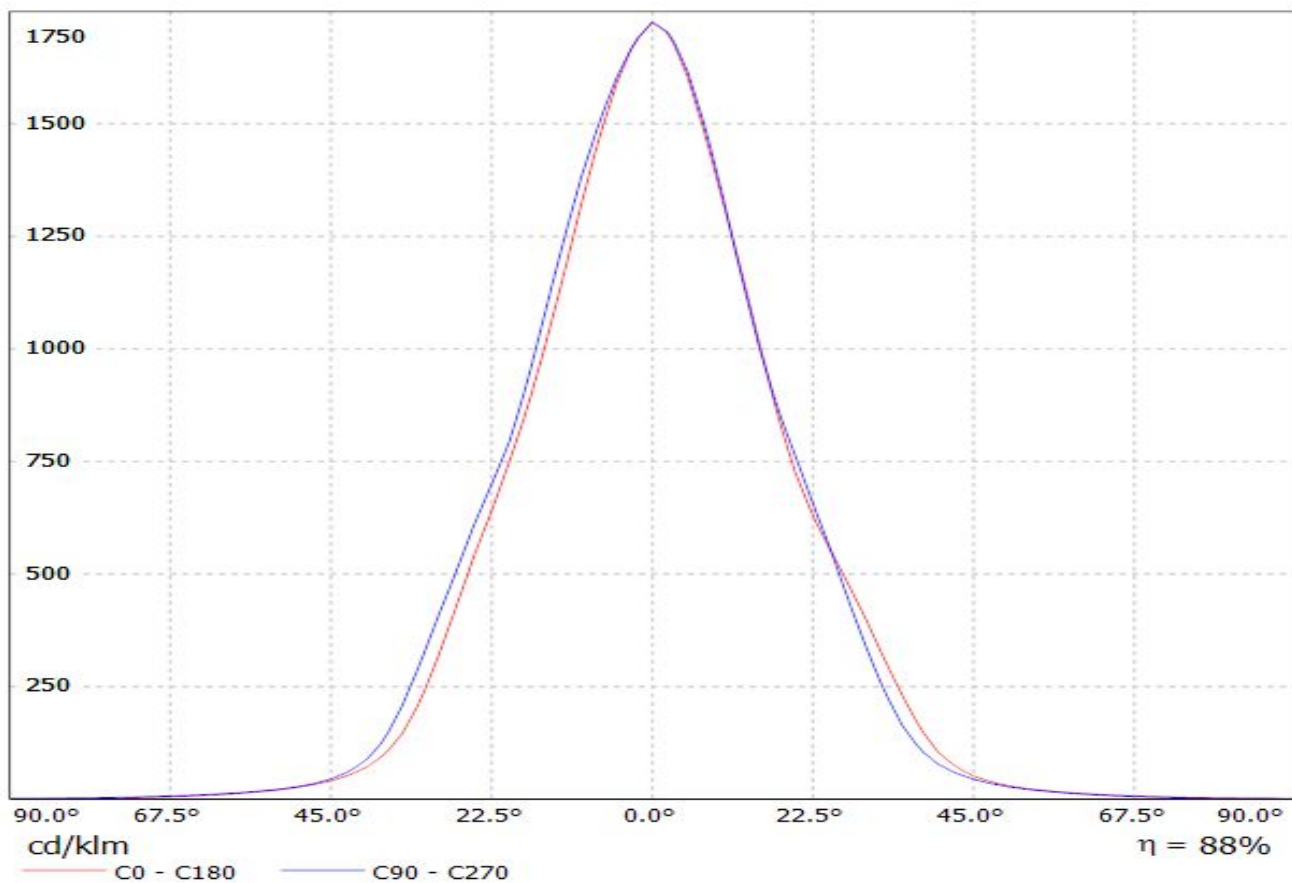
<b>Product Number</b>	FP11002_LISA2-W-PIN
<b>Family</b>	Lisa
<b>Type</b>	Assembly
<b>Color</b>	black
<b>Diameter</b>	9,9 mm
<b>Height</b>	6,6 mm
<b>Style</b>	round
<b>Optic Material</b>	PMMA
<b>Holder Material</b>	
<b>Fastening</b>	glue, pin
<b>Status</b>	production ready
<b>ROHS Compliant</b>	Yes
<b>Date Updated</b>	15/04/2016



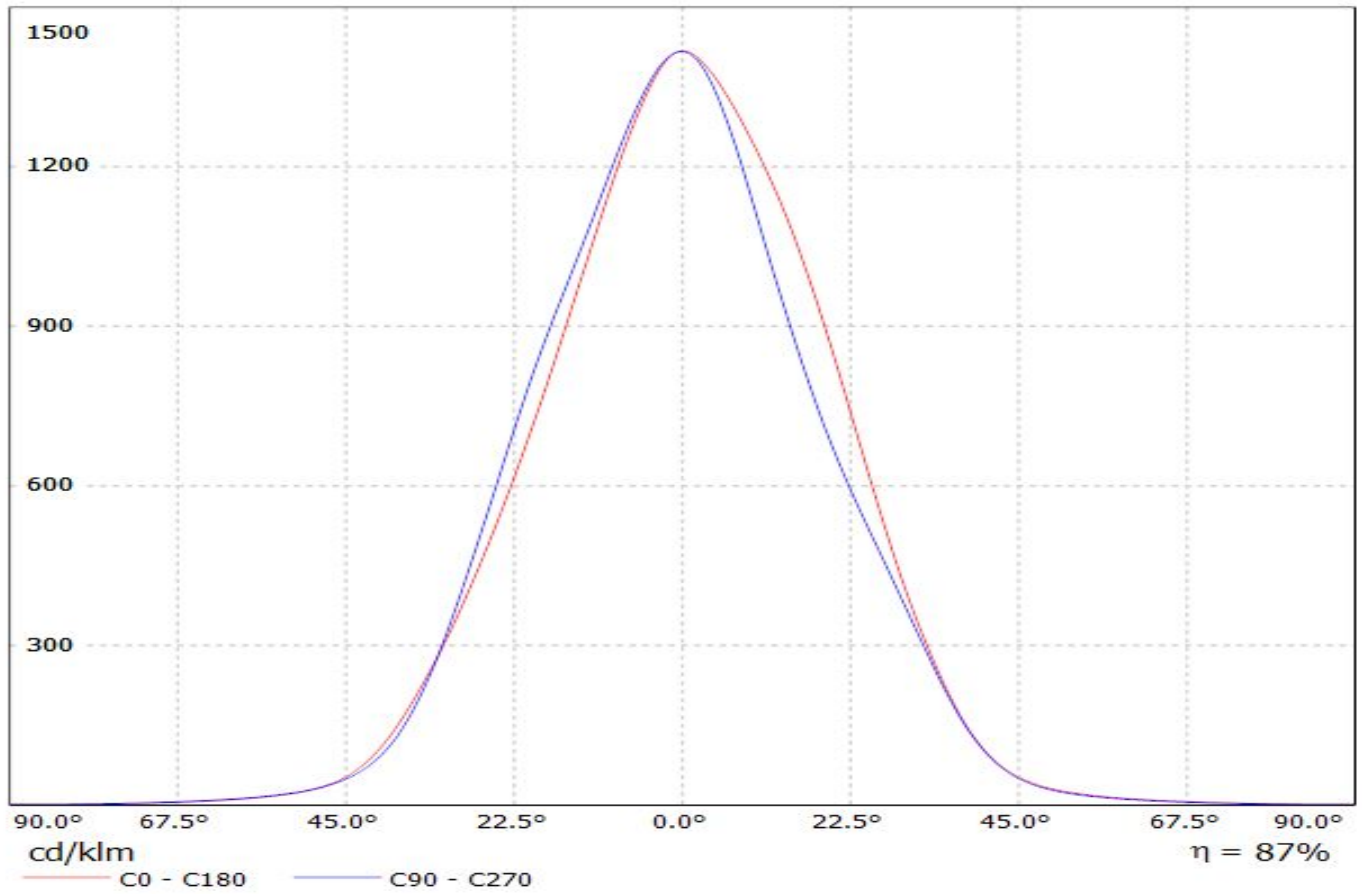
## OPTICAL PROPERTIES

LED	Viewing	Light	Effi-		Connector
	Angle	Beam	ciency	cd/lm	
Oslo SSL 80	36 deg	Wide	88 %	1.730	-
Oslo SSL 150	46 deg	Wide	90 %	2.000	-
Oslo Square EC	42 deg	Wide	89 %	1.460	-
SFH 4770S	sim: 36	Wide	sim: 96 %	-	-
Synios P2720 1 mm	sim: 27	Wide	sim: 93 %	sim: 2.870	-

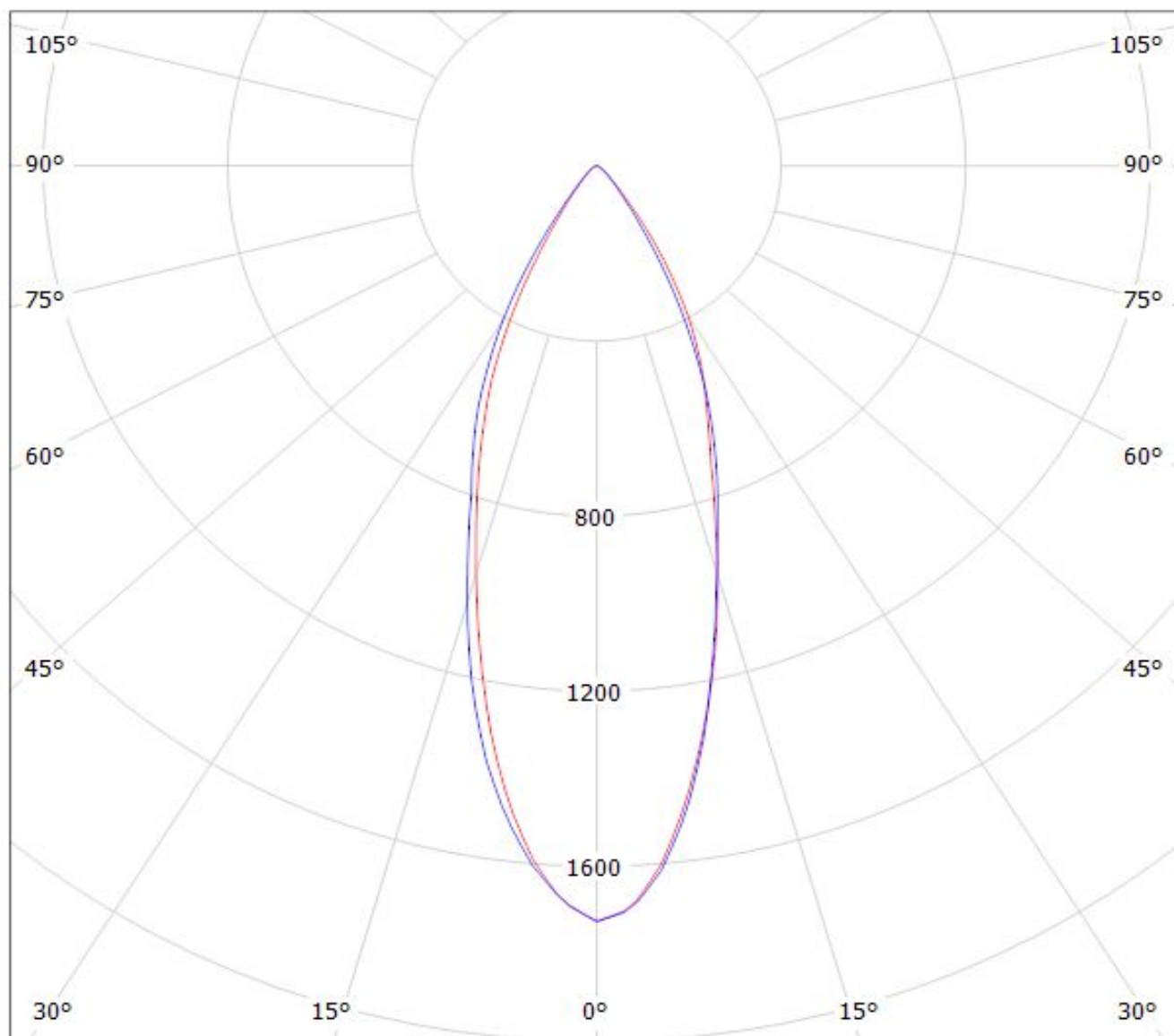
Luminaire: LEDiL Oy FP11002 & FP11082\_LISA2-W\_(SSL80) Eff.87.5%  
Lamps: 1 x Oslon SSL80 (77.5072lm@250mA)



Luminaire: LEDiL Oy Lisa2-W-PIN/CLIP\_(Oslon\_Square\_EC)  
Lamps: 1 x Oslon Square EC CCT:3000K 79lm@250mA



Luminaire: LEDiL Oy FP11002 & FP11082\_LISA2-W\_(SSL80) Eff.87.5%  
Lamps: 1 x Oslon SSL80 (77.5072lm@250mA)



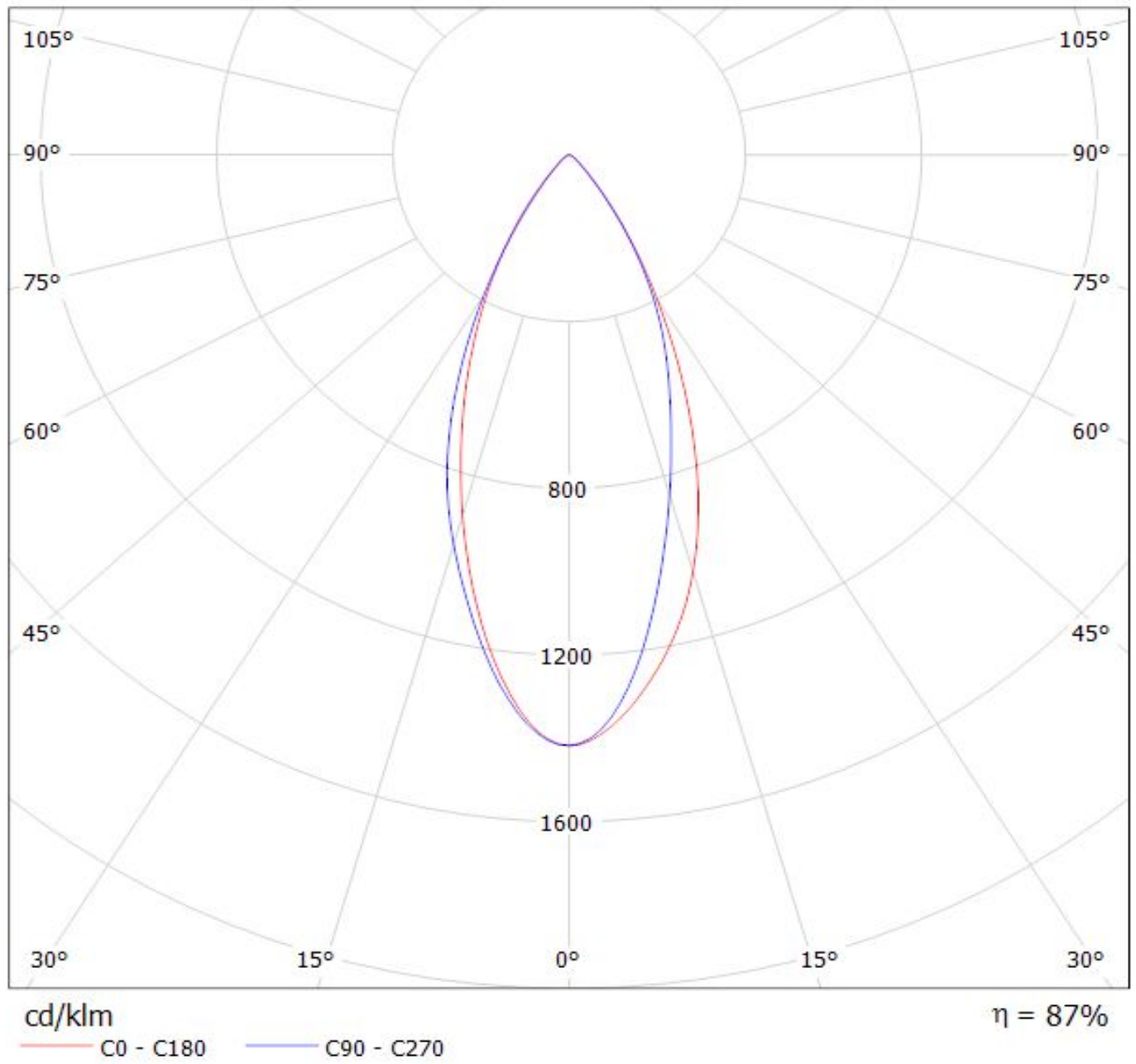
cd/klm

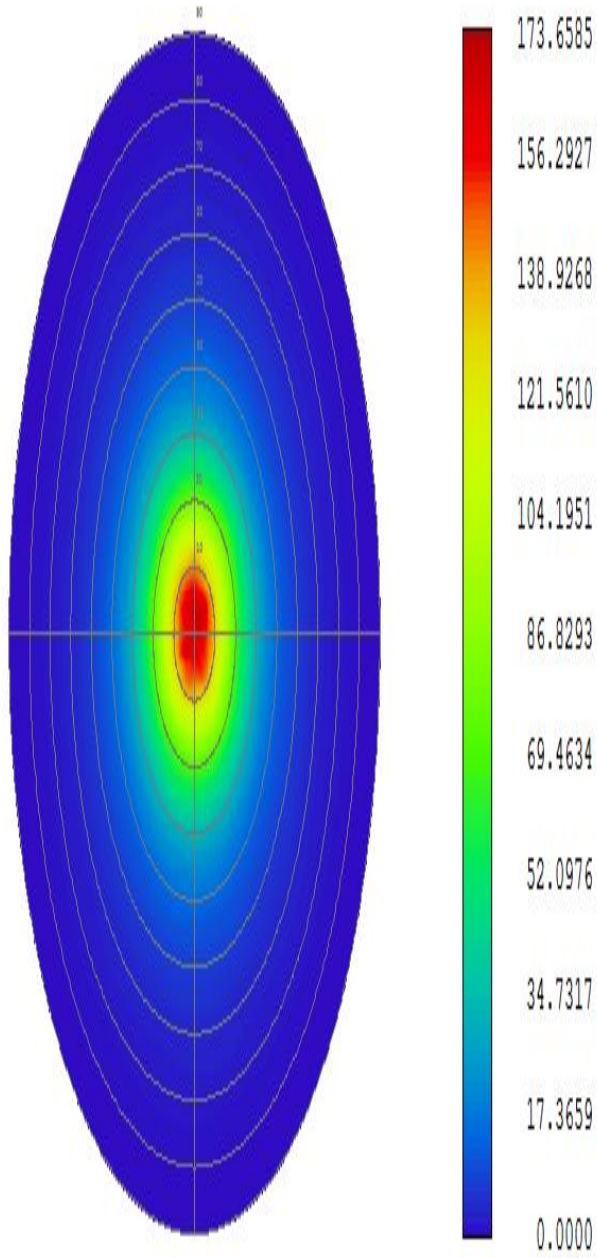
$\eta = 88\%$

— C0 - C180

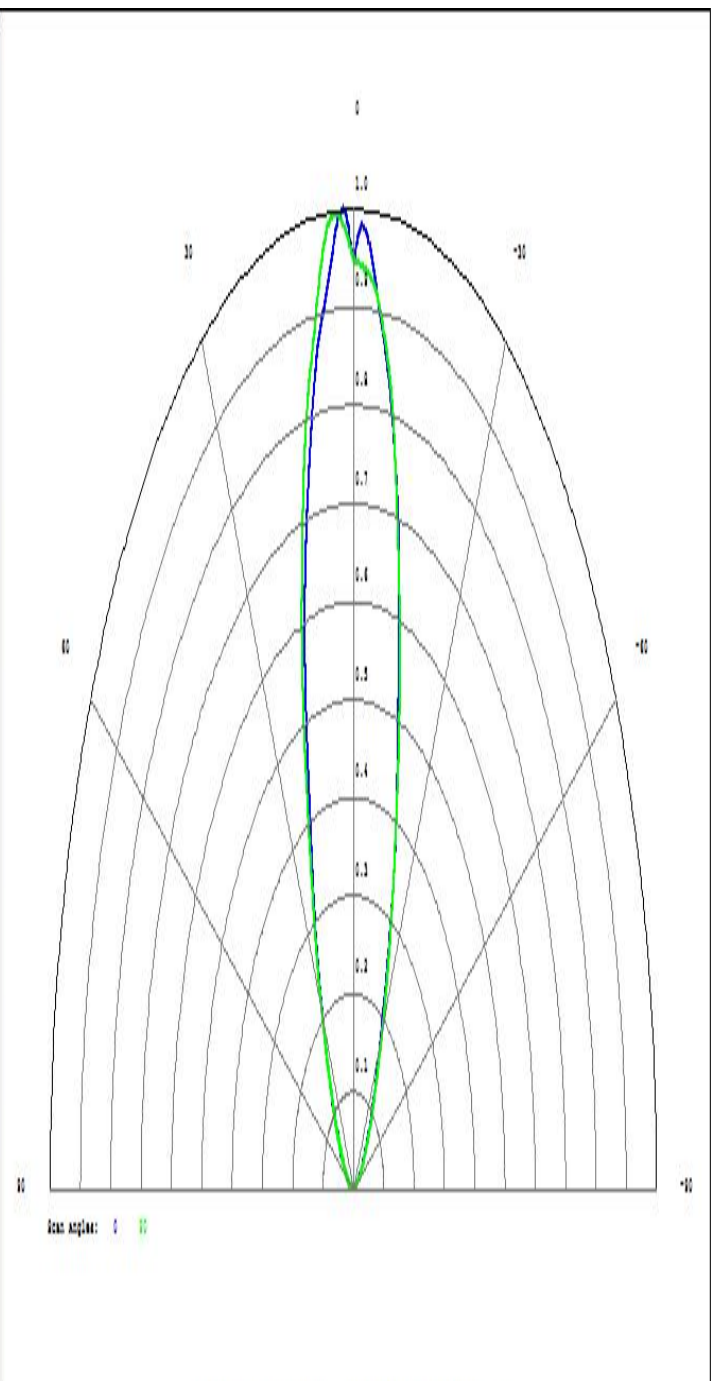
— C90 - C270

Luminaire: LEDiL Oy Lisa2-W-PIN/CLIP\_(Oslon\_Square\_EC)  
Lamps: 1 x Oslon Square EC CCT:3000K 79lm@250mA





Detector Image: Radiant Intensity



Detector Image: Radiant Intensity

**NOTE: The typical divergence will be changed by different color, chip size and chip position tolerance. The typical total divergence is the full angle measured where the luminous intensity is half of the peak value.**